

Scan— Antenna®

QUALITY MATTERS



MARITIME



Products

Complete Antenna Systems

Marine Antennas & Accessories

Connectivity matters

Dimensions	0,95 m
Weight	120 g

11023-001	In Polybag
11023-002	In Carton Tube
11023-221	In Polybag + mount kit
11023-222	In Carton Tube + mount kit



VHF23 Stainless Steel

156-162,5 MHz 3 dB

(International Maritime VHF-Band)

- Light weight antenna especially made for sail boats
- Full omni directional radiation pattern
- Stainless steel, POM, chromed brass
- UHF-female connector (PL)

Dimensions	0,95 m
Weight	120 g

11023-431	In Polybag
11023-432	In Carton Tube



VHF23-1 Stainless Steel

156-162,5 MHz 3 dB

(International Maritime VHF-Band)

- Light weight antenna especially made for sail boats
- Full omni directional radiation pattern
- Stainless steel, POM, chromed brass
- With supplied 1" Revolving Nut (G1"-11 thread)
- UHF-female connector (PL) optionally brackets

Dimensions	0,95 m
Weight	120 g

11023-001U	In Polybag
11023-002U	In Carton Tube



VHF23U Stainless Steel

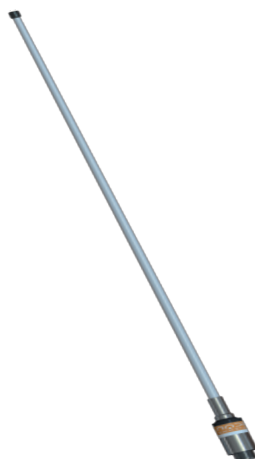
141-179 MHz 3 dB

(Tunable 6,5 MHz bandwidth)

- Light weight antenna especially made for sail boats
- Frequency tunable by customer 6,5 MHz band width
- Full omni directional radiation pattern
- Stainless steel, POM, chromed brass
- Cutting table

Dimensions	0,95 m
Weight	120 g

11033-001	In Polybag
11033-002	In Carton Tube



VHF33 Fiber Glass

156 - 162,5 MHz 3 dB

(International Maritime VHF-Band)

- Light weight fibreglass antenna especially made for sailboats
- Frequency tunable by customer 6,5 MHz band width
- Full omni-directional radiation pattern
- No groundplane needed
- Sold in kits with different brackets

Dimensions	1,37 m
Weight	0,7 - 1,1 kg

With fixed 10 or 20 m cable
1"-14NF threaded

VHF54 Fiber Glass

156-162,5 MHz 4 dB

(International Maritime VHF-Band)

- VHF antenna especially made for leisure boats
- Full omni directional radiation pattern
- 150-Watt Power
- For mounting on all US style brackets with 1"-14NF threaded stud
- Stainless steel, POM, chromed brass



11054-611	In Polybag 10 m cable
11054-612	In Carton Tube 10m cable
11054-621	In Polybag 20m cable
11073-622	In Carton Tube 20m cable

Dimensions	2,7 m
Weight	1,1 - 1,8 kg

With fixed 10 or 20 m cable
1"-14NF threaded

VHF56 Fiber Glass

156-162,5 MHz 6 dB

(International Maritime VHF-Band)

- VHF antenna especially made for leisure boats
- Full omni directional radiation pattern
- 150-Watt Power
- For mounting on all US style brackets with 1"-14NF threaded stud



11056-611	In Polybag 10 m cable
11056-612	In Carton Tube 10m cable
11056-621	In Polybag 20m cable
11056-622	In Carton Tube 20m cable



Dimensions	1.26 m
Weight	375 g

11073-001	In Polybag
11073-002	In Carton Tube
11073-431	In Polybag + 1" NUT
11073-432	In Carton Tube + 1" NUT



VHF73 Fiber Glass

146-162,5 MHz 3 dB

(International Maritime VHF-Band)

- High quality VHF antenna for professional use
- Full omni directional radiation pattern
- 150-Watt Power
- UHF-female connector (PL)

On 1" threaded pole (G1"-11 thread) with Revolving Nut Kit or on optionally brackets

Dimensions	1,26 m
Weight	375 g

11073-001N	In Polybag
11073-002N	In Carton Tube
11073-431N	In Polybag + 1" NUT
11073-432N	In Carton Tube + 1" NUT



VHF73N Fiber Glass

146-162,5 MHz 3dB

(International Maritime VHF-Band)

- High quality VHF antenna for professional use
- Full omni directional radiation pattern
- 150-Watt Power
- N-female connector
- On 1" threaded pole (G1"-11 thread) with Revolving Nut Kit or on optionally brackets

Dimensions	1.44 m
Weight	450 g

11073-001X	In Polybag
11073-002X	In Carton Tube
11073-431X	In Polybag + 1" NUT
11073-432X	In Carton Tube + 1" NUT



VHF73X Fiber Glass

118 - 174 MHz Factory Tunable 3 dB

(Customer specified frequency)

- High quality VHF antenna for professional use
- Full omni directional radiation pattern
- Specify Centre Frequency (CF) 12% BW
- 100-Watt Power
- N-female connector
- On 1" threaded pole (G1"-11 thread) with Revolving Nut Kit or on

Dimensions	0,95 m
Weight	120 g

11073-001AIR	In Polybag
11073-002AIR	In Carton Tube
11073-431AIR	In Polybag + 1" NUT
11073-432AIR	In Carton Tube + 1" NUT



VHF73AIR Fiber Glass

118 - 137 MHz 3 dB

(International Maritime VHF-Band)

- High quality VHF antenna for AIR-band
- Full omni directional radiation pattern
- 100-Watt Power
- N-female connector
- On 1" threaded pole (G1"-11 thread) with Revolving Nut Kit or on optionally brackets

Dimensions	1,36 m
Weight	220 g

VHF74 Fiber Glass

156-162,5 MHz 4 dB

(International Maritime VHF-Band)

- Economical replacement for all professional marine VHF antennas
- Improved gain compared to other high quality marine VHF antennas
- Full omni directional radiation pattern
- 150-Watt Power
- UHF-female connector (PL)
- On 1" threaded pole (G1"-11 thread) with Revolving Nut Kit or on optionally brackets



11074-001N	In Polybag
11074-002N	In Carton Tube
11074-431N	In Polybag + 1" NUT
11074-432N	In Carton Tube + 1" NUT

Dimensions	1,36 m
Weight	610 g

VHF74i Fiber Glass

156-162,5 MHz 4 dB

(International Maritime VHF-Band)

- Economical replacement for all professional marine VHF antennas
- Improved gain compared to other high quality marine VHF antennas
- Reduced antenna weight
- 150-Watt Power
- UHF-female connector (PL)
- Integrated Mast/Rail bracket



11074-003i	In Carton Box
------------	---------------

Dimensions	2,6 m
Weight	900 g

11076-001	In Polybag
11076-002	In Carton Tube
11076-431	In Polybag + 1" NUT
11076-432	In Carton Tube + 1" NUT



VHF76 Fiber Glass

156-162,5 MHz 6dB

(International Maritime VHF-Band)

- High quality 6 dB VHF antenna for professional use
- Full omni directional radiation pattern
- 150-Watt Power
- UHF-female connector (PL)
- On 1" threaded pole (G1"-11 thread) with Revolving Nut Kit or on optionally brackets

Dimensions	2,63 m
Weight	900 g

A: 149-156 MHz
B: 156-163 MHz
C: 163-170 MHz
D: 170-177 MHz

(Ordering with specified model put A, B, C or D on the back of the P/N)

11076-001	In Polybag
11076-002	In Carton Tube
11076-431	In Polybag + 1" NUT
11076-432	In Carton Tube + 1" NUT



VHF76 A/B/C/D Fiber Glass

149 - 177 MHz 6dB

(in four models A/B/C/D)

- High quality 6 dB VHF antenna for professional use
- Full omni directional radiation pattern
- 150-Watt Power
- UHF-female connector (PL)
- On 1" threaded pole (G1"-11 thread)

Dimensions	2,6 3,4 m
Weight	900 g

11076-001X	In Polybag
11076-002X	In Carton Tube
11076-431X	In Polybag + 1" NUT
11076-432X	In Carton Tube + 1" NUT



VHF76X Fiber Glass

118-174 MHz 6 dB

(Customer specified frequency)

- Factory tunable
- High quality 6 dB VHF antenna for professional use
- 150-Watt Power
- UHF-female connector (PL)
- Full omni directional radiation pattern
- Specify Centre Frequency (CF) 5% BW
- On 1" threaded pole (G1"-11 thread) with Revolving Nut Kit or on optionally brackets

Dimensions	4,50 m
Weight	5 kg

VHF89 Fiber Glass

142-166 MHz 9 dB

(International Maritime VHF-Band)

- High quality heavy duty 9 dB VHF antenna for professional use
- Full omni directional radiation pattern
- Bandwidth 24 MHz (VSWR < 2.0)
- 155-164 MHz (VSWR < 1.5)
- 150-Watt Power
- N-female connector
- Integrated mount



11089-002 In Carton Tube

Dimensions	1,22 m
Weight	1,5 kg

VHF96 Ground Plane

156-162,5 MHz 6 dB

(International Maritime VHF-Band)

- Heavy duty antenna for commercial and fishing vessels
- Full 5/8 wave Ground plane antenna
- Full Omni-Directional radiation pattern
- Power 250 watt
- Easy installation directly on 27mm pole/mast



11096-001 In polybag

Dimensions	5,70 m x 2
Weight	6 kg

BM2 – 7G 1/3/4/5 Fiber Glass

138-174 MHz 10 dB

(International Maritime VHF-Band)

- 2 sections
- High quality heavy duty 10 dB VHF antenna for professional use
- Optimum performance at all band
- Heavy duty construction for long life operation
- Power 150 watt
- Bases Omni directional
- N-female connector



1: 146-154 MHz
3: 155-163 MHz
4: 160-168 MHz
5: 166-174 MHz

XXXXXXXXX XXXXXX

Dimensions	0,95 m
Weight	120 g

15023-001	In Polybag
15023-002	In Carton Tube
15023-221	In Polybag + Mount kit
15023-222	In Carton Tube +Mount kit



DABAMFM23

DAB/AM/FM

Stainless Steel Antenna

- DAB/AM/FM receiving antenna especially made for leisure boats
- Full omni directional radiation pattern
- Stainless steel, POM, chromed brass
- UHF-female connector (PL)

Dimensions	0,95 m
Weight	160 g

15023-431	In Polybag + 1" NUT
15023-432	In Carton Tube +1 " NUT



DABAMFM23-1

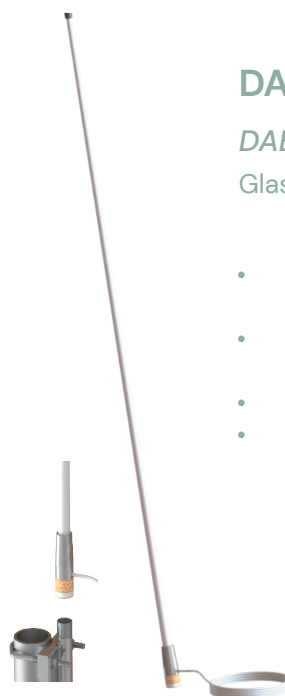
DAB/AM/FM

(with 1" Revolving Nut)

- DAB/AM/FM receiving antenna especially made for leisure boats
- Full omni directional radiation pattern
- Stainless steel, POM, chromed brass
- Light weight
- With supplied 1" Revolving Nut (G1"-11 thread)

Dimensions	1,37 m
Weight	0,7 - 1.1 kg

*With fixed 10 or 20 m cable
1"-14NF threaded*



DABAMFM54

DAB/AM/FM Receiving

Glass Fiber Antenna

- DAB/AM/FM receiving antenna especially made for leisure boats
- Economical replacement for all professional DAB/AM/FM antennas
- Full omni directional radiation pattern
- For mounting on all US style brackets with 1"-14NF threaded stud

15054-611	In Polybag 10 cm cable
15054-612	In Carton Tube 10 m cable
115054-621	In Polybag 20 m cable
15054-622	In Carton Tube 20 m cable

Dimensions	2,7 m
------------	-------

With fixed 10 or 20 m cable
1"-14NF threaded

DABAMFM56

DAB/AM/FM Receiving

Glass Fiber Antenna

- DAB/AM/FM receiving antenna especially made for leisure boats
- Economical replacement for all professional DAB/AM/FM antennas
- Full omni directional radiation pattern
- For mounting on all US style brackets with 1"-14NF threaded stud



15056-611	In Polybag 10 cm cable
15056-612	In Carton Tube 10 m cable
15056-621	In Polybag 20 m cable
15056-622	In Carton Tube 20 m cable

Dimensions	1,36 m
------------	--------

Weight	220 g
--------	-------

DABAMFM74

DAB/AM/FM Receiving

Glass Fiber Antenna

- DAB/AM/FM receiving antenna
- Long range DAB/AM/FM Radio antenna
- Full omni directional radiation pattern
- UHF-female connector (PL)
- On 1" threaded pole (G1"-11 thread) with Revolving Nut Kit or on



15074-001	In Polybag
15074-002	In Carton Tube
15074-431	In Polybag + 1" NUT
15074-432	In Carton Tube +1" NUT

Dimensions	2,6 m
------------	-------

Weight	900 g
--------	-------

DABAMFM76

DAB/AM/FM Receiving

Glass Fiber Antenna

(For professional use)

- DAB/AM/FM receiving antenna
- Long range DAB/AM/FM Radio antenna
- Full omni directional radiation pattern
- UHF-female connector (PL)
- On 1" threaded pole (G1"-11 thread) with Revolving Nut Kit or on optionally brackets



15076-001	In Polybag
15076-002	In Carton Tube
15076-431	In Polybag + 1" NUT
15076-432	In Carton Tube +1" NUT

Dimensions	0,92 m
Weight	120 g

12023-001	In Polybag
12023-002	In Carton Tube
12023-221	In Polybag + Mount kit
12023-222	In Carton Tube +Mount kit



AIS23 Stainless Steel

161,5 – 162,5 MHz 3 dB

(International AIS-band)

- Light weight antenna especially made for sail boats
- Full omni directional radiation pattern
- Stainless steel, POM, chromed brass
- UHF-female connector (PL)

Dimensions	1.37 m
Weight	0,7-1,1 kg

With fixed 10 or 20 m cable
1"-14NF threaded

12054-611	In Polybag 10 cm cable
12054-612	In Carton Tube 10 m cable
12054-621	In Polybag 20 m cable
12054-622	In Carton Tube 20 m cable



AIS54 Glass Fiber

161.5 – 162.5 MHz 4dB

(International AIS-band)

- Long range International Maritime AIS Antenna especially made for leisure boats
- Improved gain compared to other high quality marine antennas
- Full omni directional radiation pattern
- 150-Watt Power

Dimensions	1,36 m
Weight	220 g

With fixed 10 or 20 m cable
1"-14NF threaded

12074-001	In Polybag
12074-002	In Carton Tube
12074-431	In Polybag + 1" NUT
12074-432	In Carton Tube +1" NUT



AIS74 Glass Fiber

161.5 – 162.5 MHz 4dB

(International AIS-band)

- Long range International Maritime AIS Antenna for professional use
- Improved gain compared to other high quality marine antennas
- Full omni directional radiation pattern
- 150-Watt Power
- UHF-female connector (PL)

Dimensions	2,70 m
Weight	1,8-2,2 kg

With fixed 10 or 20 m cable
1"-14NF threaded

12056-611	In Polybag 10 cm cable
12056-612	In Carton Tube 10 m cable
12056-621	In Polybag 20 m cable
12056-622	In Carton Tube 20 m cable



AIS56 Glass Fiber

161.5 – 162.5 MHz 6dB
(International AIS-band)

- Long range International Maritime AIS Antenna especially made for leisure boats
- Improved gain compared to other high quality marine antennas
- Full omni directional radiation pattern
- 150-Watt Power

Dimensions	2,60 m
Weight	900 g

15074-001	In Polybag
15074-002	In Carton Tube
15074-431	In Polybag + 1" NUT
15074-432	In Carton Tube +1" NUT



AIS76 Glass Fiber

161.5 – 162.5 MHz 6dB
(International AIS-band)

- Long range International Maritime AIS Antenna for professional use
- Improved gain compared to other high quality marine antennas
- Full omni directional radiation pattern
- 150-Watt Power
- UHF-female connector (PL)

Dimensions	2,60 m
Weight	520 g

10100-000 to be
ordered separately



VHFGPS4 Glass Fiber

Dual Band VHF/GNSS
156 – 162.5 MHz / 1575.5 MHz 3 dB
(Maritime Identification systems)

- High quality dual-band VHF and active
- GNSS antenna for professional use
- 4 satellite GNSS systems included: GPS, GLONASS, BeiDou and Galileo
- VHF 3 dB / GNSS: 26 dB
- Single down-lead antenna cable design
- N-female connector

(Other packages to be found on datasheet)

11604-432/431	In Polybag
11604-712/711	In Carton Tube
11604-722/721	In Polybag + 1" NUT



Dimensions	0,86 – 1.15 m
Weight	Max 400 g

A: 380–400 MHz
 B: 406–430 MHz
 C: 425–450 MHz
 D: 445–470 MHz
 E: 330–360 MHz

(Ordering with specified model put
 A, B, C, D or E on the back of the P/N)

14043-001	In Polybag
14043-002	In Carton Tube
14043-431	In Polybag + 1" NUT
14043-432	In Carton Tube +1" NUT



UHF43 A/B/C/D/E Glass Fiber

330–470 MHz 3 dB
 (covered by 5 models)
 (TETRA, ISM, Marine, PMR, etc.)

- Omni directional radiation pattern
- 250-Watt Power
- N-female connector
- On 1" threaded pole (G1"-11 thread) with Revolving Nut Kit or on optionally brackets

Dimensions	1.15 m
Weight	Max 400 g

14043-001X	In Polybag
14043-002X	In Carton Tube
14043-431X	In Polybag + 1" NUT
14043-432X	In Carton Tube +1" NUT



UHF43X Fiber Glass

398 – 512 MHz 3dB
 (Customer specified frequency)

- High quality UHF antenna
- Omni directional radiation pattern
- Specify Centre Frequency (CF) 5% BW
- 250-Watt Power
- N-female connector
- On 1" threaded pole (G1"-11 thread) with Revolving Nut Kit or on optionally brackets

Dimensions	0.64 m
Weight	350 g

A: 330–380 MHz
 B: 380–430 MHz
 C: 430–470 MHz
 D: 460–510 MHz

(Ordering with specified model put
 A, B, C or D on the back of the P/N)

14044-001	In Polybag
14044-002	In Carton Tube
14044-431	In Polybag + 1" NUT
14044-432	In Carton Tube +1" NUT



UHF44A/B/C/D Glass Fiber

330 – 510 MHz 3dB
 (covered by 4 models)
 (TETRA, ISM, Marine, PMR, etc.)

- Lightweight UHF antenna
- Omni directional radiation pattern
- 200-Watt Power
- N-female connector
- On 1" threaded pole (G1"-11 thread) with Revolving Nut Kit or on optionally brackets

Dimensions	1.34-.154 m
Weight	Max 500 g

A: 380-400 MHz
 B: 410-430 MHz
 C: 430-450 MHz
 D: 450-470 MHz

*(Ordering with specified model put
 A, B, C or D on the back of the P/N)*

14046-001	In Polybag
14046-002	In Carton Tube
14046-431	In Polybag + 1" NUT
14046-432	In Carton Tube +1" NUT



UHF46A/B/C/D Glass Fiber

380-470 MHz 6dB

- High quality UHF antenna
- Omni directional radiation pattern
- Specify Centre Frequency (CF) 4% BW
- 250-Watt Power
- N-female connector
- On 1" threaded pole (G1"-11 thread) with Revolving Nut Kit or on optionally

Dimensions	1.44 - 1.54 m
Weight	Max 500 g

14046-001X	In Polybag
14046-002X	In Carton Tube
14046-431X	In Polybag + 1" NUT
14046-432X	In Carton Tube +1" NUT



UHF46X Glass Fiber

398 - 512 MHz 6dB

(Customer specified frequency)

- High quality UHF antenna
- Omni directional radiation pattern
- Specify Centre Frequency (CF) 4% BW
- 250-Watt Power
- N-female connector
- On 1" threaded pole (G1"-11 thread) with Revolving Nut Kit or on optionally brackets

Dimensions	2,60 m
Weight	520 g

A: 380-410 MHz
 B: 400-430 MHz
 C: 420-450 MHz
 D: 440-470 MHz

*(Ordering with specified model put
 A, B, C or D on the back of the P/N)*

14049-001	In Polybag
14049-002	In Carton Tube
14049-431	In Polybag + 1" NUT
14049-432	In Carton Tube +1" NUT



UHF49A/B/C/D Glass Fiber

380 - 470 MHz 9 dB

(covered by 4 models)

(TETRA, ISM, Marine, PMR, etc.)

- High quality UHF antenna
- Omni directional radiation pattern
- 250-Watt Power
- N-female connector
- On 1" threaded pole (G1"-11 thread) with Revolving Nut Kit or on optionally brackets optionally brackets

Dimensions	0,44 m
Weight	450 g

A: 806–866 MHz
B: 824–894 MHz
C: 872–960 MHz

(Ordering with specified model put
A, B, or C on the back of the P/N)

14093-001	In Polybag
14093-002	In Carton Tube
14093-431	In Polybag + 1" NUT
14093-432	In Carton Tube +1" NUT



UHF93 A/B/C Glass Fiber

803 – 960 MHz LTE 3 dB

(covered by 3 models)

(GSM850/900, UMT850, IOT, SigFox)

- 800/900 MHz LTE antenna
- Omni directional radiation pattern
- 200-Watt Power
- N-female connector
- On 1" threaded pole (G1"-11 thread) with Revolving Nut Kit or on optionally brackets

Dimensions	1,14–1.34 m
Weight	450 g

A: 806–866 MHz
B: 824–894 MHz
C: 890–960 MHz

(Ordering with specified model put
A, B, or C on the back of the P/N)

14096-001	In Polybag
14096-002	In Carton Tube
14096-431	In Polybag + 1" NUT
14096-432	In Carton Tube +1" NUT



UHF96 A/B/C Glass Fiber

803 – 960 MHz LTE 6 dB

(covered by 3 models)

(GSM850/900, UMT850, IOT, SigFox)

- 800/900 MHz LTE antenna
- Omni directional radiation pattern
- 200-Watt Power
- N-female connector
- On 1" threaded pole (G1"-11 thread) with Revolving Nut Kit or on optionally brackets

Dimensions	1.34 m
Weight	550 g

A: 824–894 MHz
B: 890–960 MHz

(Ordering with specified model put
A, or B on the back of the P/N)

14099-001	In Polybag
14099-002	In Carton Tube
14099-431	In Polybag + 1" NUT
14099-432	In Carton Tube +1" NUT



UHF99 A/B Glass Fiber

824 – 960 MHz LTE 9dB

(covered by 2 models)

(GSM850/900, UMT850, IOT, SigFox)

- 800/900 MHz LTE antenna
- Omni directional radiation pattern
- 200-Watt Power
- N-female connector
- On 1" threaded pole (G1"-11 thread) with Revolving Nut Kit or on optionally brackets

Dimensions	1,54 m
------------	--------

Weight	710 g
--------	-------

LTE700WB Fiber Glass

725–930 MHz 6 dB

(LTE700, GSM750/810/850, UMTS800/850)

- Wide-band / high-gain LTE antenna
- Omni directional radiation pattern
- 200-Watt Power
- N-female connector
- On 1" threaded pole (G1"-11 thread) with Revolving Nut Kit or on optionally brackets



14076-001	In Polybag
14076-002	In Carton Tube
14076-431	In Polybag + 1" NUT
14076-432	In Carton Tube +1" NUT

Dimensions	1.44 m
------------	--------

Weight	500 g
--------	-------

LTE800WB Fiber Glass

790–960 MHz 6 dB

(LTE800, GSM850/900, UMTS900, IoT868)

- Wide-band / high-gain LTE antenna
- Omni directional radiation pattern
- 200-Watt Power
- N-female connector
- On 1" threaded pole (G1"-11 thread with Revolving Nut Kit or on optionally brackets



14086-001	In Polybag
14086-002	In Carton Tube
14086-431	In Polybag + 1" NUT
14086-432	In Carton Tube +1" NUT

Dimensions	0.64 m
Weight	310 g

14186-001	In Polybag
14186-002	In Carton Tube
14186-431	In Polybag + 1" NUT
14186-432	In Carton Tube + 1" NUT

UHF186 Glass Fiber

1710 - 1880 MHz GSM 6 dB
(GMS1800, DCS)

- Omni directional radiation pattern
- 100-Watt Power
- N-female connector
- On 1" threaded pole (G1"-11 thread) with Revolving Nut Kit or on optionally brackets



Dimensions 0,84 m

Weight 400 g

UHF189 Glass Fiber

1710–1880 MHz GSM 9 dB

(GSM1800, DCS)

- Omni directional radiation pattern
- 100-Watt Power
- N-female connector
- On 1" threaded pole (G1"-11 thread) with Revolving Nut Kit or on optionally brackets

14189-001	In Polybag
14189-002	In Carton Tube
14189-431	In Polybag + 1" NUT
14189-432	In Carton Tube + 1" NUT



Dimensions 0,64 m

Weight 310 g

UHF196 Glass Fiber

1850–1990 MHz GSM 6 dB

(GSM1900, DECT, PCS)

- Omni directional radiation pattern
- 100-Watt Power
- N-female connector
- On 1" threaded pole (G1"-11 thread) with Revolving Nut Kit or on optionally brackets

14196-001	In Polybag
14196-002	In Carton Tube
14196-431	In Polybag + 1" NUT
14196-432	In Carton Tube + 1" NUT



Dimensions 0.84 m

Weight 400 g

UHF199 Glass Fiber

1850–1990 MHz GSM 9 dB

(GSM1900, DECT, PCS)

- Omni directional radiation pattern
- 100-Watt Power
- N-female connector
- On 1" threaded pole (G1"-11 thread) with Revolving Nut Kit or on optionally brackets

14199-001	In Polybag
14199-002	In Carton Tube
14199-431	In Polybag + 1" NUT
14199-432	In Carton Tube + 1" NUT



Dimensions	0.64 m
Weight	350 g

14219-001	In Polybag
14219-002	In Carton Tube
14219-431	In Polybag + 1" NUT
14219-432	In Carton Tube +1" NUT



UHF219 Fiber Glass

1920–2170 MHz 9 dB

(UMTS, 3G)

- Omni directional radiation pattern
- 40-Watt Power
- N-female connector
- On 1" threaded pole (G1"-11 thread with Revolving Nut Kit or on optionally brackets

Dimensions	0,21 m
Weight	230 g

14243-001	In Polybag
14243-002	In Carton Tube
14243-431	In Polybag + 1" NUT
14243-432	In Carton Tube +1" NUT



UHF243 Fiber Glass

2300–2500 MHz 3 dB

(UMTS, WLAN, WiFi 2.4)

- Omni directional radiation pattern
- 40-Watt Power
- N-female connector
- On 1" threaded pole (G1"-11 thread) with Revolving Nut Kit or on optionally brackets

Dimensions	0.89 m
Weight	600 g

142498-001	In Polybag
14249-002	In Carton Tube
14249-431	In Polybag + 1" NUT
14249-432	In Carton Tube +1" NUT



UHF249 Fiber Glass

2310–2485 MHz 9 dB

(WLAN, ISM, WiFi 2.4)

- Omni directional radiation pattern
- 80-Watt Power
- N-female connector
- On 1" threaded pole (G1"-11 thread) with Revolving Nut Kit or on optionally brackets

Dimensions	0,21 m
Weight	230 g

14263-001	In Polybag
14263-002	In Carton Tube
14263-431	In Polybag + 1" NUT
14263-432	In Carton Tube +1" NUT



UHF263 Fiber Glass

2500–2693 MHz 3 dB

(4G, LTE2600)

- Omni directional radiation pattern
- 100-Watt Power
- N-female connector
- On 1" threaded pole (G1"-11 thread) with Revolving Nut Kit or on optionally brackets

Dimensions	0,44 m
------------	--------

Weight	300 g
--------	-------

14493-001	In Polybag
14493-002	In Carton Tube
14493-431	In Polybag + 1" NUT
14493-432	In Carton Tube + 1" NUT



UHF4G Multiband

790-2690 MHz LTE 3-10 dB
(2G/3G/4G) All band one antenna

- High quality Cellular antenna
- LTE/GSM/UMTS/WiFi 2.4
- Compact and light weight
- Omni directional radiation pattern
- 100-Watt Power
- N-female connector
- On 1" threaded pole (G1"-11 thread) with Revolving Nut Kit or on optionally brackets

Dimensions	0,47 m
------------	--------

Weight	360 g
--------	-------

14593-001	In Polybag
14593-002	In Carton Tube
14593-431	In Polybag + 1" NUT
14593-432	In Carton Tube + 1" NUT



UHF5G Multiband

698-3800 MHz LTE 3-10 dB
(2G/3G/4G/5G) All band one antenna

- High quality cellular antenna
- 5G/LTE/GSM/UMTS/WiFi 2.4
- Compact and light weight
- Omni directional radiation pattern
- 100-Watt Power
- N-female connector
- With fixed 1" Revolving Nut or on optionally brackets
- On 1" threaded pole (G1"-11 thread) with Revolving Nut Kit or on optionally brackets
-

Dimensions	0,64 m
------------	--------

Weight	440 g
--------	-------

UHF5G-plus is a long-range high gain multiband antenna.

Covering 450 - 470 MHz and 698 - 3800 MHz in one and same antenna.

Suitable for GSM(2G), UMTS(3G), LTE(4G) and 5G NR(5G) devices.

14693-001	In Polybag
14693-002	In Carton Tube
14693-431	In Polybag + 1" NUT
14693-432	In Carton Tube + 1" NUT



UHF5G-plus Multiband

450-3800 MHz LTE 3-10 dB

All band on antenna

450-470 MHz
698-3800 MHz

- High quality cellular antenna professional use
- 5G/4G/LTE/GSM/UMTS/WiFi 2.4
- Compact and light weight
- Omni directional radiation pattern
- 100-Watt Power
- N-female connector
- with fixed 1" Revolving Nut or on optionally brackets
- On 1" threaded pole (G1"-11 thread) with Revolving Nut Kit or on optionally brackets

Dimensions	1.20 m
Weight	350 g



16101-001	In Polybag
16101-002	In Carton Tube

LORAN/DGPS1

LORAN and DGPS systems –
International Maritime

(Antenna for high precision navigation)

- Omni directional radiation pattern
- 200-Watt Power
- Light weight design
- 3/8-24 INF threaded stud

Dimensions	2,70 m
Weight	400 g



16102-001	In Polybag
16102-002	In Carton Tube

LORAN/DGPS2

LORAN and DGPS systems –
International Maritime

(Antenna for high precision navigation)

- Omni directional radiation pattern
- 200-Watt Power
- Light weight design
- 3/8-24 INF threaded stud

Dimensions	0.40 m
Weight	500 g



WM-70-1

380-470 MHz 3 dB

(Wall Antenna Tetra / UHF)

- Fullband 380-470 MHz
- Optimum performance throughout band
- Suitable for indoor/outdoor use
- Improvement of the connection in weak areas
- 50 Watt power
- 5 meters RG58 + FME-female

WM-70-1 In Polybag

Dimensions	0.56 m
Weight	140 g



WIFI2B9

2400-2495 / 4910-5925 MHz 9 dB

(Dual band WiFi 2.4 / 5.0)

- Omni directional radiation pattern
- 10-Watt Power
- N-female connector
- On 1" threaded pole (G1"-11 thread) with Revolving Nut Kit or on optionally brackets

18001-001	In Polybag
18001-002	In Carton Tube
18001-431	In Polybag + 1" NUT
18001-432	In Carton Tube + 1" NUT

Dimensions	220*154*32 mm
Weight	1.1 kg



51003-003	8-10 MHz Low
51004-003	4-6 MHz High
51005-003	6-8 MHz High
51006-003	8-10 MHz High

DU-26

138-174 MHz

VHF 6-cavity duplexer

- Wide band tunable
- Spacing 4-6 / 6-8 / 8-10 MHz
- 50-Watt Power
- N-female connector
- Low: 138-156 MHz
- High: 152-174 MHz

If duplex TX and RX frequencies are stated when ordering, the duplexers are delivered factory adjusted and confirmed with a 5100x-003X version

Dimensions	224*154*32 mm
Weight	1.1 kg



51007-003	5 - 7 MHz Not tuned In box
51007-003X	5 - 7 MHz Factory tuned In box
51008-003	9 - 13 MHz Not tuned In box
51008-003X	9 - 13 MHz Factory tuned In box

DU-706

406-470 MHz

VHF 6-cavity duplexer

- 406-470 MHz
- Wide band tunable
- Spacing 5-7 / 9-13 MHz
- 50-Watt Power
- N-female connector

If duplex TX and RX frequencies are stated when ordering, the duplexers are delivered factory adjusted and confirmed with a 5100x-003X version

Dimensions	200 mm
Weight	750 g



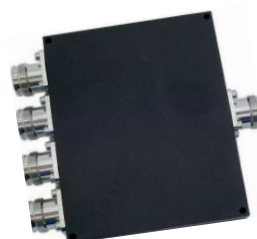
SP-70-2	380 - 475 MHz, 2 ways In Box
SP-70-3	380 - 475 MHz, 3 ways In Box
SP-70-4	380 - 475 MHz, 4 ways In Box

SP-70 Serie

*External Outdoor Divider/Splitter
300 Watt*

- 2-, 3- & 4-way high power splitters
- Covering the UHF band
- Power handling up to 300 Watt
- For out- and indoor use

Dimensions	
Weight	240-570 g



SP-0305-2	300 - 500 MHz, 2 ways In Box
SP-0305-3	300 - 500 MHz, 3 ways In Box
SP-0305-4	300 - 500 MHz, 4 ways In Box

SP-0305 Serie

300-500 MHz

- 2-, 3- & 4-way high power splitters
- Covering the UHF band
- Power handling up to 50 Watt
- For indoor use

Dimensions	58*144*74 mm
------------	--------------

Weight	500 g
--------	-------



CH-702	350-520 MHz 2 CH hybrid coupler/combiner unit.
--------	--

CH-702

350-520 MHz

UHF 2 channel hybrid coupler/combiner

- UHF hybrid coupler/combiner
- Combining two transmitters on one antenna.
- No tuning required. Full bandwidth.
- N-female
- 100 watt power @ch

Dimensions	304*116*50 mm
------------	---------------

Weight	2.2 kg
--------	--------



CH-703	380-500 MHz 3 CH hybrid coupler/combiner
--------	--

CH-703

380-500 MHz

UHF 3 channel hybrid coupler/combiner

- UHF hybrid coupler/combiner.
- Combining 3 transmitters on one antenna.
- No tuning required. Full bandwidth
- N-female
- 100 watt power @ch

Dimensions	304*116*50 mm
------------	---------------

Weight	2.4 kg
--------	--------

CH-704

380-500 MHz

UHF 4 channel hybrid coupler/combiner

- UHF hybrid coupler/combiner.
- Combining 4 transmitters on one antenna.
- No tuning required. Full bandwidth
- N-female

CH-704	380-500 MHz 4 CH hybrid combiner unit
--------	---------------------------------------

Dimensions	58*144*74 mm
Weight	500 g



CH-22 136-175 MHz 2 CH hybrid combiner unit

CH-22

136-175 MHz

UHF 2 channel hybrid coupler/combiner

- VHF hybrid coupler/combiner.
- Combining two transmitters on one antenna.
- No tuning required. Full bandwidth.
- 100 watt per channel

Dimensions	304*116*50 mm
Weight	2.2 kg



CH-23 136-175 MHz 3 CH hybrid combiner unitunitunit.

CH-23

136-175 MHz

UHF 3 channel hybrid coupler/combiner

- VHF hybrid coupler/combiner
- Combining 3 transmitters on 1 antenna.
- No tuning required. Full bandwidth
- 100 watt per channel

Dimensions	304*116*50 mm
Weight	2.4 kg

CH-24

136 - 175 MHz

UHF 4 channel hybrid coupler/combiner

- VHF hybrid coupler/combiner.
- Combining four transmitters on one antenna.
- No tuning required. Full bandwidth.
- N-female
- 100 watt per channel

CH-704 380-500 MHz 4 CH hybrid combiner unit

Dimensions Ø 48 mm

Weight 0.1 kg



16001-001 In polybag

GNSS01 (WHITE)

26 dB

Low-Profile Active Marine GNSS-Antenna

Active GNSS (GLONASS/GPS & Galileo/ Bei-Dou) antenna for through-hole deck or bracket mounting.

- LNA Gain 26 dB
- For navigation and tracking purpose
- Low profile design
- Non-corrosive
- FME-male connector (integrated in base)
- 3.3-5.5VDC via cable

Dimensions Ø 48 mm

Weight 0.1 kg



16002-001 In polybag

GNSS02 (BLACK)

26 dB

Low-Profile Active Marine

Active GNSS (GLONASS/GPS & Galileo/ Bei-Dou) antenna for through-hole deck or bracket

- LNA gain 26 dB
- For navigation and tracking purpose
- Low profile design
- Non-corrosive
- FME-male connector (integrated in base)
- 3.3-5.5 VDC via cable

Dimensions 0.40 mm

Weight 0.30 kg



16299-033 to be ordered separately



13100-431 In polybag

13100-432 In Carbon tube + 1" NUT

HF100 RX

0.1 – 30 MHz (RECEIVING only)

Active low-profile broadband RX antenna

- Active LF/HF antenna (receive only)
- Low-profile end-fed antenna design for GMDSS
- Mounting Kit for mounting on G1"-11 threaded pole or bracket included
- Dedicated Power supply 16299-003 (Not included to be ordered separately)

Dimensions 0.40 mm

Weight 0.30 kg



16299-033 to be ordered separately



16201-431 In polybag

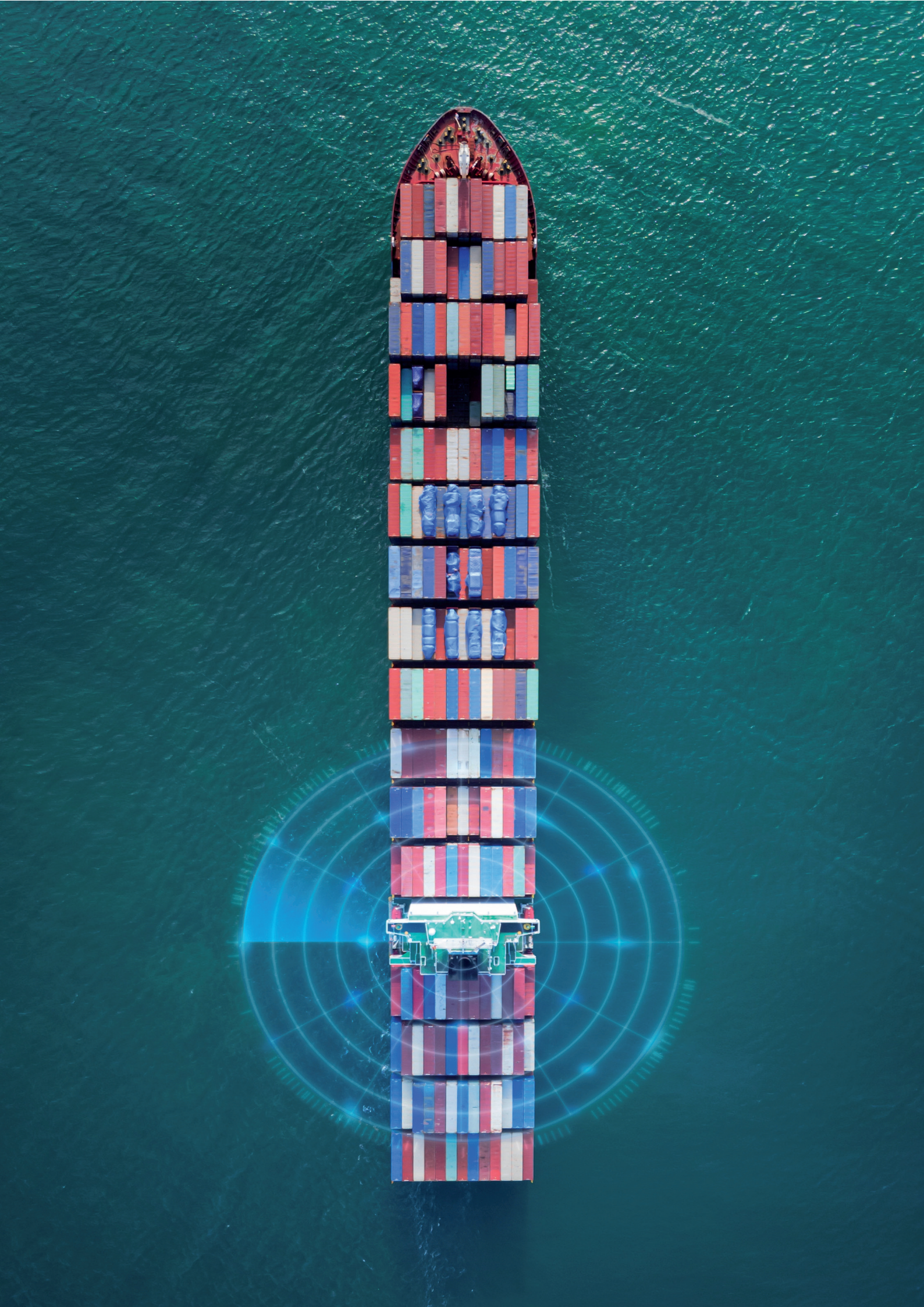
16201-432 In Carbon tube + 1" NUT

NAVTEX Tri-Band

0.49 MHz, 0.518 MHz, 4.2095 MHz (NAVTEX) (RECEIVING only)

Active low-profile 3-band Navtex antenna

- Active 3-band Navtex (Navigational Telex)
- Low-profile end-fed multiband antenna design
- Mounting Kit for mounting on G1"-11 threaded pole or bracket included
- Dedicated Power supply 16299-003 (Not included to be ordered separately)



Dimensions	4.9–8.2 m
Weight	1.9–6.8 kg



HF500/600/700/850

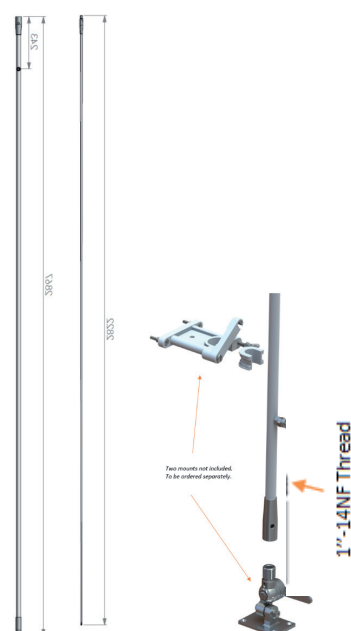
1.4 – 30 MHz 2 parts

Two-part LF/HF Fiberglass Antennas

- High quality HF antennas for professional use
- Suited for antenna systems with Automatic Tuner Units
- Designed for GMDSS installations
- Rugged design for demanding environments
- Chrome plated solid brass joints
- Mast / Rail mounted □ Side fed via open single wire
- Full Omni-Directional radiation pattern
- Small Clamp kit for 5–7m antennas for mast/rail mounted 10000–153 (to be ordered separately)
- Large Clamp kit for 8–9m antennas for mast/rail mounted 10000–163 (to be ordered separately) HF850 only

HF500	13500–002 4.9 m 1.9 kg 500–Watt PEP
HF600	13602–002 6.0 m 2.0 kg 750–Watt PEP
HF700	13702–002 7.0 m 2.6 kg 1000–Watt PEP
HF850	13802–001 8.2 m 6.8 kg 1000–Watt PEP

Dimensions	0.56 m
Weight	140 g



HF501/601/701

1.4 – 30 MHz 2 parts

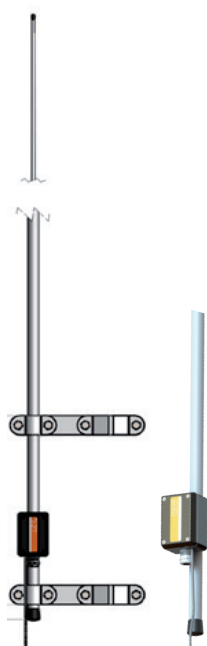
Two-part LF/HF Fiberglass Antennas

- High quality HF antennas for professional use
- Suited for antenna systems with Automatic Tuner Units
- Designed for GMDSS installations
- Rugged design for demanding environments
- Chrome plated solid brass joints
- 1"-14NF Thread mounted for 4-way mount and upper bracket (must be ordered separately) for easy lay down
- Side fed via open single wire
- Full Omni-Directional radiation pattern
- Upper support bracket 10000–471 (to be ordered separately)
- Mount option for 1"-14NF Thread 10000–323 (to be ordered separately)

HF501	13500–082 4.9 m 2.0 kg 500–Watt PEP
HF601	13602–082 6.0 m 2.1kg 750–Watt PEP
HF701	13702–082 7.0 m 2.7 kg 1000–Watt PEP

Dimensions 5.0-7.0 m

Weight 2.1-2.8 kg



HF510	13510-002 5.0 m 2.1 kg 500-Watt PEP
HF610	13612-002 6.0 m 2.2 kg 750-Watt PEP
HF710	13712-002 7.0 m 2.8 kg 1000-Watt PEP

HF510/610/710

1.4 – 30 MHz 2 parts

Two-part LF/HF Fiberglass Antennas

- High quality HF antennas for professional use
- Suited for antenna systems with Automatic Tuner Units
- Designed for GMDSS installations
- Rugged design for demanding environments
- Chrome plated solid brass joints
- Mast / Rail mounted
- Coaxial connected via connection box
- Full Omni-Directional radiation pattern
- Small Clamp kit for 5-7m antennas for mast/rail mounted 10000-153 (to be ordered separately)

Dimensions 5.0 – 7.0 m

Weight 2.1-2.8 kg



HF520	13520-002 5.0 m 2.1 kg Receive only
HF620	13622-002 6.0 m 2.2 kg Receive only
HF720	13722-082 7.0 m 2.8 kg Receive only

HF520/620/720 (RECEIVING only)

0.15-30 MHz 2 parts

Two-part LF/HF Fiberglass Antennas

- High quality HF antennas for professional use
- Built in matching transformer for low frequency receiving
- Rugged design for demanding environments
- Chrome plated solid brass joints
- Mast / Rail mounted
- Coaxial connected via connection box
- Full Omni-Directional radiation pattern
- Small Clamp kit for 5-7m antennas for mast/rail mounted 10000-153 (to be ordered separately)

Dimensions 6.0-7.0 m

Weight 2.3-2.6kg



HF6000	13600-002 6.0 m 2.3 kg 750-Watt PEP
HF7000	13700-002 7.0 m 2.6 kg 1000-Watt PEP

HF6000/7000

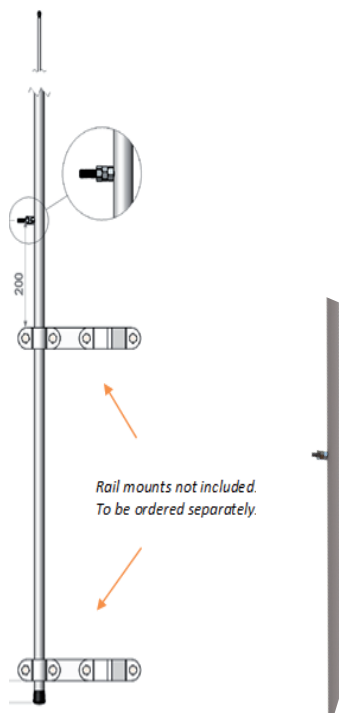
1.4 – 30 MHz 3 parts

Three-part LF/HF Fiberglass Antennas

- High quality HF antennas for professional use
- Suited for antenna systems with Automatic Tuner Units
- Designed for GMDSS installations
- Rugged design for demanding environments
- Chrome plated solid brass joints
- Mast / Rail mounted
- Side fed via open single wire
- Full Omni-Directional radiation pattern
- Small Clamp kit for 5-7m antennas for mast/rail mounted 10000-153 (to be ordered separately)

Dimensions 8.0-9.0 m

Weight 140 g



HF8000	13800-002 8 m 6 kg 1200-Watt PEP
HF9000	13900-082 9 m 7.1 kg 1200-Watt PEP

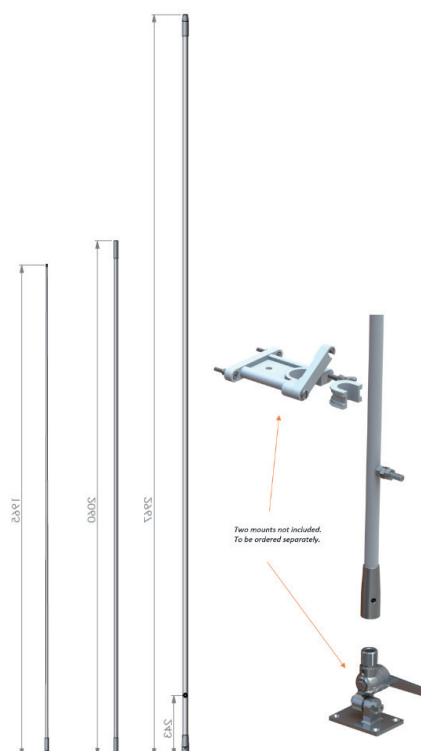
HF8000/9000

1.4 – 30 MHz 3 parts

Three-part LF/HF Fiberglass Antennas

- High quality HF antennas for professional use
- Suited for antenna systems with Automatic Tuner Units
- Designed for GMDSS installations
- Rugged design for demanding environments
- Chrome plated solid brass joints
- Mast / Rail mounted
- Side fed via open single wire
- Full Omni-Directional radiation pattern
- Large Clamp kit for 8-9m antennas for mast/rail mounted 10000-163 (to be ordered separately)

Dimensions	6.0-7.0 m
Weight	2.4-2.8 kg



HF6001	13600-082 6.0 m 2.4 kg 750-Watt PEP
HF7001	13700-082 7.0 m 2.8 kg 1000-Watt PEP

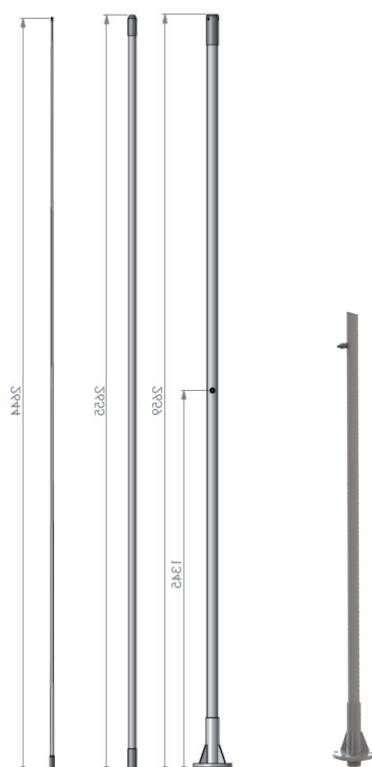
HF6001/7001

1.4 – 30 MHz 3 parts

Three-part LF/HF Fiberglass Antennas

- High quality HF antennas for professional use
- Suited for antenna systems with Automatic Tuner Units
- Designed for GMDSS installations
- Rugged design for demanding environments
- Chrome plated solid brass joints
- 1"-14NF Thread mounted for 4-way mount and upper bracket (must be ordered separately) for easy lay down
- Side fed via open single wire
- Full Omni-Directional radiation pattern
- Upper support bracket 10000-471 (to be ordered separately)
- Mount option for 1"-14NF Thread mounted 10000-323 (to be ordered separately)

Dimensions	8.0-9.0 m
Weight	8,2-9,3 kg



HF8001	13800-092 8.0 m 8.2 kg 1200-Watt PEP
HF9001	13900-092 9.0 m 9.3 kg 1200-Watt PEP

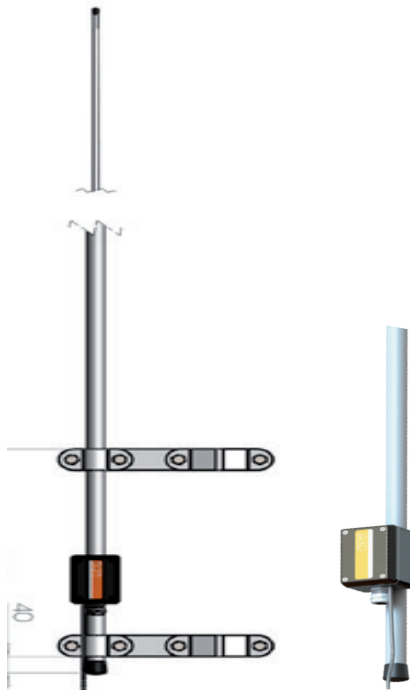
HF8001/9001

1.4 – 30 MHz 3 parts

Three-part LF/HF Fiberglass Antennas

- High quality HF antennas for professional use
- Suited for antenna systems with Automatic Tuner Units
- Designed for GMDSS installations
- Rugged design for demanding environments
- Chrome plated solid brass joints
- Self-supporting antenna with deck mount
- Side fed via open single wire
- Full Omni-Directional radiation pattern

Dimensions	60-7.0 m
Weight	2.6-2.9 kg



HF6100	13610-002 6.0 m 2.6 kg 750-Watt PEP
HF7100	13710-002 7.0 m 2.9 kg 1000-Watt PEP

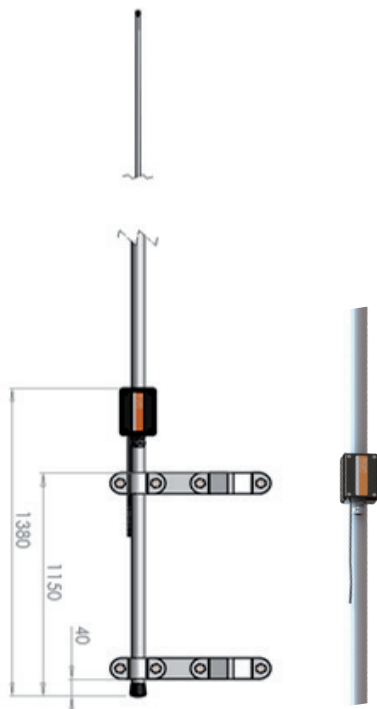
HF6100/7100

1.4 – 30 MHz 3 parts

Three-part LF/HF Fiberglass Antennas

- High quality HF antennas for professional use
- Suited for antenna systems with Automatic Tuner Units
- Designed for GMDSS installations
- Rugged design for demanding environments
- Chrome plated solid brass joints
- Mast / Rail mounted
- Coaxial connected via connection box
- Full Omni-Directional radiation pattern
- Small Clamp kit for 5-7m antennas for mast/rail mounted 10000-153 (to be ordered separately)

Dimensions	8.0-9.0 m
Weight	6,1-7,2 kg



HF8100	13810-002 8.0 m 6.1 kg 1200-Watt PEP
HF9100	13910-002 9.0 m 7.2 kg 1200-Watt PEP

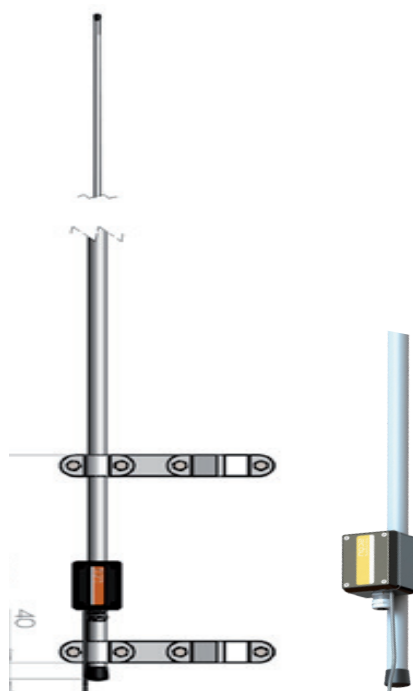
HF8100/9100

1.4 – 30 MHz 3 parts

Three-part LF/HF Fiberglass Antennas

- High quality HF antennas for professional use
- Suited for antenna systems with Automatic Tuner Units
- Designed for GMDSS installations
- Rugged design for demanding environments
- Chrome plated solid brass joints
- Mast / Rail mounted
- Coaxial connected via connection box
- Full Omni-Directional radiation pattern
- Large Clamp kit for 8-9m antennas for mast/rail mounted 10000-163 (to be ordered separately)

Dimensions	6.0-7.0 m
Weight	2.4-2.9 kg



HF6200	13620-002 6.0 m 2.6 kg Receive only
HF7200	13720-002 7.0 m 2.9 kg Receive only

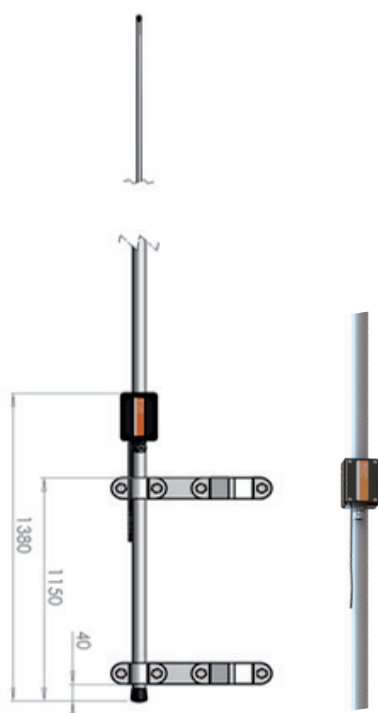
HF6200/7200 (RECEIVING only)

0.15 – 30 MHz 3 parts

Three-part LF/HF Fiberglass Antennas

- High quality HF antennas for professional use
- Built in matching transformer for low frequency receiving
- Rugged design for demanding environments
- Chrome plated solid brass joints Mast / Rail mounted
- Coaxial connected via connection box
- Full Omni-Directional radiation pattern
- Small Clamp kit for 5-7m antennas for mast/rail mounted 10000-153 (to be ordered separately)

Dimensions	8.0-9.0 m
Weight	6.1-7.2 kg



HF8001	13820-002 8.0 m 6.1 kg Receive only
HF9001	13920-002 9.0 m 7.2 kg Receive only

HF8001/9001 (RECEIVING only)

0.15 – 30 MHz 3 parts

Three-part LF/HF Fiberglass Antennas

- High quality HF antennas for professional use
- Built in matching transformer for low frequency receiving
- Rugged design for demanding environments
- Chrome plated solid brass joints Mast / Rail mounted
- Coaxial connected via connection box
- Full Omni-Directional radiation pattern
- Large Clamp kit for 8-9m antennas for mast/rail mounted 10000-163 (to be ordered separately)

Dimensions Ø 94 mm

Weight 300 g



PASSIVE OMNI ANTENNA

IRIDIUM CERTIFIED

Passive omnidirectional antenna for Iridium (Certified)

- Passive Antenna for Iridium terminals
- Well suited for Iridium GO!
- Requires no pointing towards satellite
- Rugged design for reliable performance in harsh conditions
- Compact design
- Smooth surface low loss radome
- Mounts on any US-style Mounting Bracket with 1"-14NF threaded stud

65900-003 Antenna only - In hard box

Dimensions Ø 94 mm

Weight 320 g



PASSIVE OMNI ANTENNA

IRIDIUM CERTIFIED

Passive omnidirectional dual band antenna for Iridium (Certified)

- Passive Antenna for Iridium terminals
- Well suited for Iridium GO!
- Requires no pointing towards satellite
- Rugged design for reliable performance in harsh conditions
- Compact dual band (SAT/GPS)
- Smooth surface low loss radome
- Mounts on any US-style Mounting Bracket with 1"-14NF threaded stud

65800-003 Antenna only - In hard box

Dimensions Ø 95 mm

Weight 150 g



PASSIVE OMNI ANTENNA IDEAL FOR IRIDIUM GO!

IRIDIUM CERTIFIED

Passive omnidirectional antenna for Iridium (Certified)

- Passive Antenna for Iridium terminals
- Well suited for Iridium GO!
- Requires no pointing towards satellite
- Low loss radome
- Mounts on any US-style Mounting Bracket with 1"-14NF threaded stud

65000-001 Antenna only - In polybag

91006-011 Adapter cable for Iridium GO - In Polybag

Dimensions Ø 95 mm

Weight 150 g



60600-001

Thuraya Passive Antenna

- Passive Antenna for Thuraya terminals
- Omni-Directional Antenna
- Dual-band SAT/GPS antenna
- Built-in active GPS antenna
- Mounts on any US-style Mounting Bracket with 1"-14NF threaded stud

Dimensions Ø 94 mm

Weight 320 g



60805-003

Thuraya Passive Antenna

- Passive Antenna for Thuraya terminals
- Omni-Directional Antenna
- Dual-band SAT/GPS antenna
- Built-in active GPS antenna
- Mounts on any US-style Mounting Bracket with 1"-14NF threaded stud

Dimensions Ø 111 mm

Weight 170 g



60415-003

Thuraya Passive Antenna

- Built-in filtered passive GPS antenna
- Dual-band SAT/GPS antenna design
- Made for magnetic mounting on vehicle roofs (steel) and adhesive mounting on any surface

Dimensions	Ø 111 mm
------------	----------

Weight	170 g
--------	-------



60401-013

60401-023

60401-033

60401-043

Thuraya Passive Antenna

- Ready to use solutions for X5-Touch, XT/XT-LITE, XT-PRO/XT-PRO DUAL, SatSleeve and SatSleeve Hotspot
- Low profile design
- Easy magnetic mounting on vehicle steel roof or trunk lid
- Sold in complete kits including Antenna, Extension cables and Adapters

Dimensions	Ø 111 mm
------------	----------

Weight	170 g
--------	-------



60400-001

Thuraya Passive Antenna

- Passive Antenna for Thuraya terminals
- Omni-Directional Antenna
- Dual-band SAT/GPS antenna
- Built-in active GPS antenna
- Made for Magnet mounting on steel roofs and adhesive mounting

Dimensions	Ø 111 mm
------------	----------

Weight	170 g
--------	-------



60410-001

Thuraya Passive Antenna

- Passive Antenna for Thuraya terminals
- Omni-Directional Antenna
- Multiband SAT/GPS/3G antenna
- Built-in active GPS antenna
- Made for Magnet mounting on steel roofs and adhesive mounting

Dimensions	Ø 30-60 mm
Weight	660 g



MAST/RAIL MOUNT

- Heavy Duty bracket for direct mounting of antenna
- PU powder coated Aluminium
- Mounting Ø30-60mm with supplied U-bolts
- Fits all Marine and Base Station Antennas with 1"-14NF external threaded base

10000-183

Dimensions	Ø 10-30 mm
Weight	250 g



WALL/RAIL MOUNT SS

- Stainless steel bracket light version
- Mount hole for antenna Ø 16.5mm
- Mounting Ø10-30mm pole with supplied U-bolts
- Fits all Marine and Base Station Antennas with 1"-14NF external threaded base

10000-141 In polybag

Dimensions	Ø 16,5/25 mm
Weight	250 g



MAST/WALL UNIVERSAL MOUNT SS

- Stainless steel mount
- Mount hole for antenna Ø 16.5mm / Ø 25mm
- For installation of Marine and Base Station antennas on side of mast or on wall separately)

10000-221

Dimensions	Ø 30-90 mm
Weight	250 g



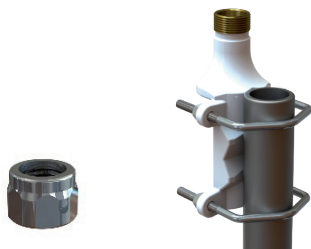
MAST MOUNT UNIVERSAL SS

- Universal Mast Mount for lightweight & medium duty antennas (max. 1.5m)
- High grade AISI-316 stainless steel
- Mounting Ø30-90mm rails and pole to be ordered separately)

10000-191

Dimensions	Ø 30 – 75 mm
------------	--------------

Weight	1,55 kg
--------	---------



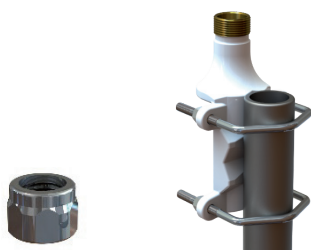
10000-133

MAST/RAIL MOUNT HD

- For all Marine and Base antennas with the 1" Revolving Nut
- Heavy Duty bracket for use at sea
- Solid Brass, White
- Mounting Ø30-75mm pole
- G1"-11
- NOTE! 1" Revolving Nut Kit 10000-431 is not included

Dimensions	Ø 30-75 mm
------------	------------

Weight	1,55 kg
--------	---------



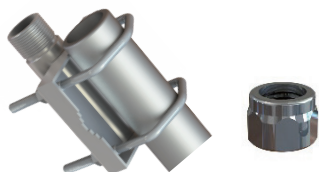
10000-133A

MAST/RAIL MOUNT HD

- For all Marine and Base antennas with the 1" Revolving Nut
- Heavy Duty bracket for use at sea
- Solid Brass, White
- Mounting Ø30-75mm Aluminum pole
- G1"-11
- NOTE! 1" Revolving Nut Kit 10000-431 is not included

Dimensions	Ø 30-60 mm
------------	------------

Weight	860 g
--------	-------



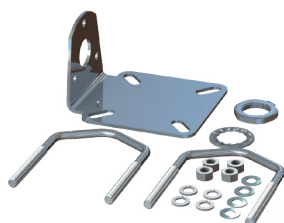
10102-003

MAST/RAIL MOUNT SS

- For all Marine and Base antennas with the 1" Revolving Nut
- Polished marine grade AISI-316 stainless steel pole bracket
- Mounting Ø30-60mm
- G1"-11
- NOTE! 1" Revolving Nut Kit 10000-431 is not included

Dimensions	Ø 38-75 mm
------------	------------

Weight	650 g
--------	-------



10000-173

MAST/RAIL MOUNT SS

- Stainless steel bracket
- Heavy Duty bracket for use at sea
- Mount hole for antenna Ø 25mm
- Mounting Ø38-75mm pole with supplied U-bolts
- Fits all Marine and Base Station Antennas with 1"-14NF external threaded base

Dimensions	Ø 30-90 mm
------------	------------

Weight	1,2 kg
--------	--------

10000-153



MAST/RAIL MOUNT KIT HF ANTENNAS (SMALL)

- Small Mount Clamp kit for 5-7m
- long HF antennas
- Steel (Galvanized)
- Mounting Ø30-90mm rails and poles (Kit including 2 brackets)

Dimensions	Ø 30 - 90mm
------------	-------------

Weight	2,3 kg
--------	--------

10000-163



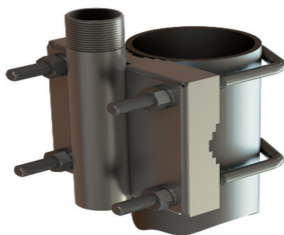
MAST/RAIL MOUNT KIT HF ANTENNAS (large)

- Large Mount Clamp kit for 8-9m
- long HF antennas
- Steel (Galvanized)
- Mounting Ø30-90mm rails and Poles (Kit including 2 brackets)

Dimensions	Ø 30-60 mm
------------	------------

Weight	660 g
--------	-------

10000-123



MAST/RAIL MOUNT SS

- Polished marine grade AISI-316 stainless steel pole bracket
- Used with all Marine with 1"-14NF internal threaded base
- Mounting Ø30-60mm with supplied U-bolts

Dimensions	H 105 mm
------------	----------

Weight	300 g
--------	-------

10000-021



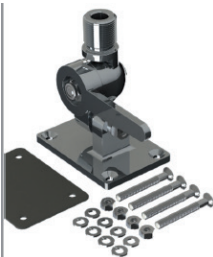
DECK MOUNT 1"-14NF

- Polished Stainless-steel Mount
- Fits all Marine with 1"-14NF internal threaded base
- Height 105mm
- Mounting Bolt-on (No mounting hardware / bolts and nuts included)

Dimensions	120 mm
------------	--------

Weight	900 g
--------	-------

10000-323



4-WAY MOUNT HD

- Heavy duty 4-Way tiltable easy lay-down mount
- Chrome plated solid brass
- Deck or wall mounting of Marine
- Fits all Marine and Base Station Antennas with internal 1"-14NF threaded base

Dimensions	H 75 mm
------------	---------

Weight	360 g
--------	-------

10003-003



DECK MOUNT SS HD

- Polished Stainless-steel Mount
- For all Marine and Base antennas with the 1" Revolving Nut
- Height 75mm
- G1"-11
- NOTE! 1" Revolving Nut Kit 10000-431 is not included

Dimensions	H 41 mm
------------	---------

Weight	30 g
--------	------

10000-011



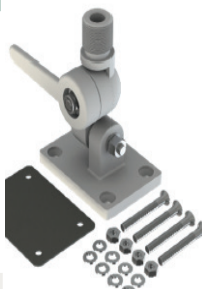
DECK MOUNT Lightweight 1"-14NF

- Nylon Deck Mount
- Fits all Marine with 1"-14NF internal threaded base
- Height 41mm
- NOTE! Not suitable for heavy type antennas

Dimensions	H 123 mm
------------	----------

Weight	300 g
--------	-------

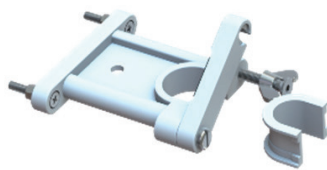
10000-313



4-WAY MOUNT LW

- 4-Way tiltable easy lay-down
- Chrome plated solid brass
- Mounting on Deck or wall
- Light Weight Antennas
- Fits all Marine and Base Station Antennas with internal 1"-14NF threaded base
- NOTE! Not suitable for heavy type antennas

Dimensions	Ø 21-40 mm
Weight	300 g

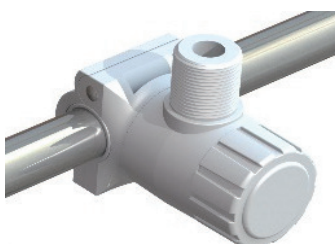


UPPER SUPPORT BRACKET LF/HF

- Easy lay-down type Upper Support Bracket for HF-Antennas
- Strong reinforced Nylon
- Accepts antenna Ø 21 – 40 mm

10000-471

Dimensions	Ø 21-26 mm
Weight	175 g



RAIL MOUNT LW 1"14NF

- 4-way easy lay-down rail mount for light-weight marine, Satcom and GPS antennas with US-style internal 1"-14NF threaded base
- Accepts rails Ø 21 mm (1/2") and Ø 26 mm (3/4")

10000-111

Dimensions	100 mm
Weight	40 g



ADAPTER TUBE LW

- NuyNylon adapter tube for converting USstyle 1"-14NF threaded brackets into Standard G1"-11 threaded type
- The adapter tube makes it possible to place all light-weight type antennas with 1" Revolving Nut

10000-411

Dimensions	58 mm
Weight	136 g



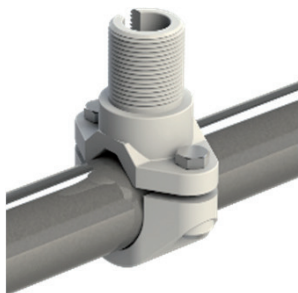
ADAPTER TUBE HD (58MM)

- Adapter Tube for placing all Marine an Base Antennas with 1" Revolving Nut Mounting System (G1"-11) on any USstyle 1"-14NF threaded brackets
- Chrome plated solid brass

10000-461

Dimensions	Ø 22-26mm
------------	-----------

Weight	100 g
--------	-------



10000-101

GPS RAIL MOUNT 1"-14NF

- Universal Rail Mount for light-weight marine, Satcom and GPS antennas with 1"-14NF outer threaded base
- Accepts rails Ø 22 to Ø 26 mm
- Low cost

Dimensions	H 66 mm
------------	---------

Weight	40 g
--------	------



10000-441

GPS-ADAPTER 1"-14NF

- Adapter especially made to mount GNSS01 (16001-000) and GNSS02 (16002-000) on US-style brackets with 1"-14NF inner threaded stud

Dimensions	H 41 mm
------------	---------

Weight	
--------	--



10000-421

1" ADAPTER TUBE HD (150MM)

- Chromed solid brass adapter tube for converting US-style 1"-14NF into G1"-11 threaded type
- Makes it possible to place all antennas with 1" Revolving Nut mounting on any US-style bracket with 1"-14NF threaded stud

Dimensions	300 mm
------------	--------

Weight	350 g
--------	-------



10000-051

EXTENSION TUBE (300MM)

- Polished stainless steel Extension Mast for marine antennas with internal threaded 1"-14NF base
- 1"-14NF inner & 1"-14NF outer thread

Dimensions	Ø 24,5 mm
Weight	13 g

15 026 IP

PROTECTION CAP

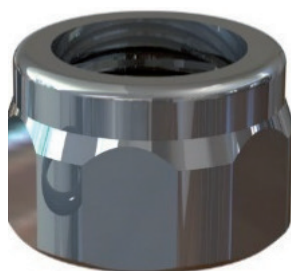


- Strong rubber connector protectioncap especially made for protection of UHF and N type connectors used on marine and base station installations. The cap can be fitted to either RG58 or RG213/14 type of cables

Dimensions	H 27,52 mm
Weight	50 g

10000-431

1" REVOLVING NUT KIT

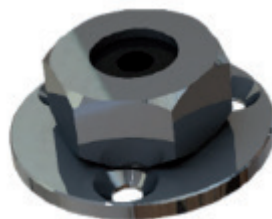


- 1" Revolving Nut and O-ring for mounting Marine & Base Antennas on G1"-11 threaded brackets
- Chrome plated solid brass

Dimensions	Ø 5-6 mm
Weight	20 g

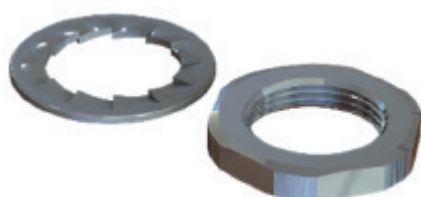
10000-481A

CABLE FEED THROUGH



- Water-proof Cable Feed-through for deck and wall mounting
- For cable Ø 5-6 mm (RG213 a.o)
- Chrome plated solid brassbracket with 1"-14NF threaded stud

Dimensions	Ø 25-26 mm
Weight	50 g



10000-501A

MOUNTING KIT LARGE

- Mounting Kit for mounting Marine and Base Station Antennas on brackets with mounting hole Ø 25-26 mm

Dimensions	Ø 31,5 mm
------------	-----------

Weight	12 g
--------	------



10000-451

ADAPTER VHF/AIS/DAB23

DELRIN 1"-14NF

- Light-weight adapter for placing VHF23 type antennas on US-style brackets with 1"-14 threaded stud

Dimensions	Ø 16-17,5 mm
------------	--------------

Weight	20 g
--------	------



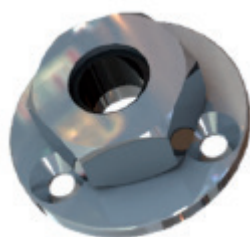
10000-491

MOUNTING ADAPTER

- Mounting Kit for mounting lightweight and medium duty Marine and Base Station Antennas on brackets with mounting hole Ø 16 - 17.5 mm

Dimensions	Ø 10-12 mm
------------	------------

Weight	55 g
--------	------



10000-481B

CABLE FEED THROUGH

- Water-proof Cable Feed-through for deck and wall mounting
- For cable Ø 10-12 mm (RG213 a.o)
- Chrome plated solid brass

Dimensions	Ø 16-17,5 mm
------------	--------------

Weight	15 g
--------	------



10000-500B

MOUNTING KIT SMALL

- Mounting Kit for mounting lightweight and medium duty Marine and Base Station Antennas on brackets with mounting

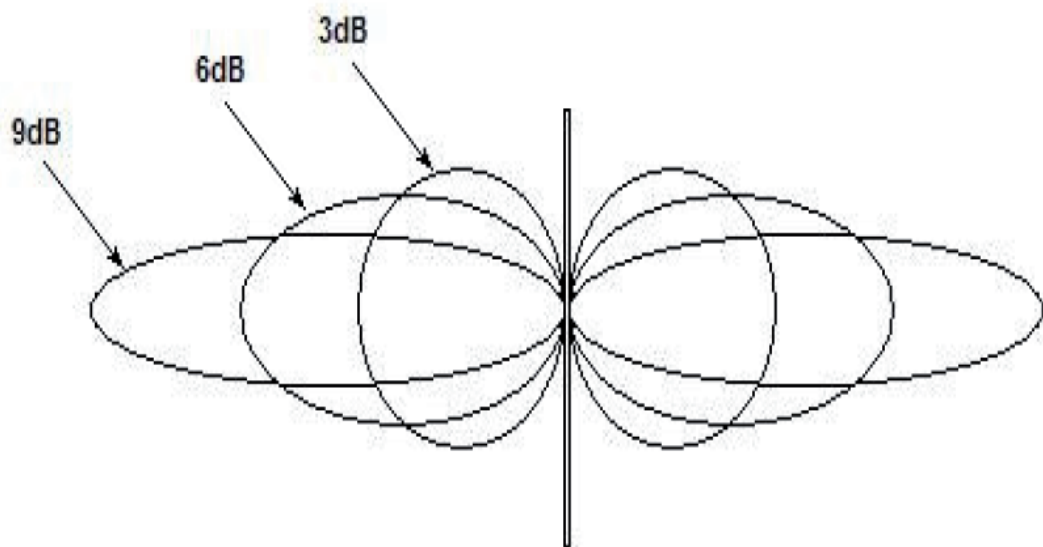
Gain Reference

Gain is one of the main parameters of an antenna.

The gain of an antenna is a figure stating how much energy the antenna transmits/receives in the main direction compared to a reference antenna

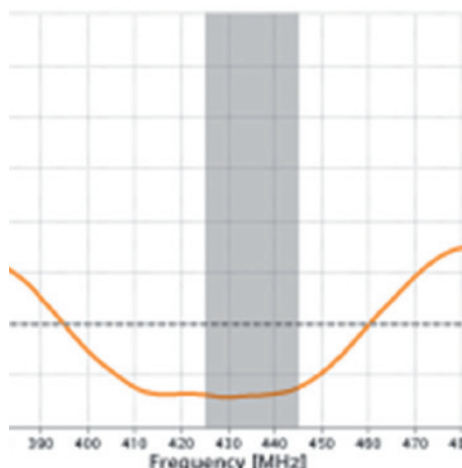
Conversion between the simple equation: 0 dBd = 2.15 dBi

dB (Marine)	dBi	dBd
3	5.15	0
6	8.15	3
9	11.15	5



VSWR

VSWR (Voltage Standing Wave Ratio), is a measure of how well the antenna is matched to 50 ohms at different frequencies. VSWR 1.0:1 is a perfect match.





Scan—Antenna®

It's the Antennas that make the modern world go around.

Without them global communication wouldn't exist and most of our technology would be useless. Antennas matter. High quality systems matter even more.

Everyday millions of people rely and depend on the know-how and care we put into making state-of-the-art solutions.

Our partners matter to us, and we highly appreciate that they trust us with their present and future business. Therefore, we will be visible and accessible in the mind of our partners.

We're a tech-company making solutions fit for the future – with solid and honest values: Quality, flexibility, and responsibility. We will always make sure we deliver the best in everything we do.

Quality, flexibility, and responsibility are the values that matter the most when building strong and unique connections to our partners and co-workers.

CONNECTIVITY MATTERS